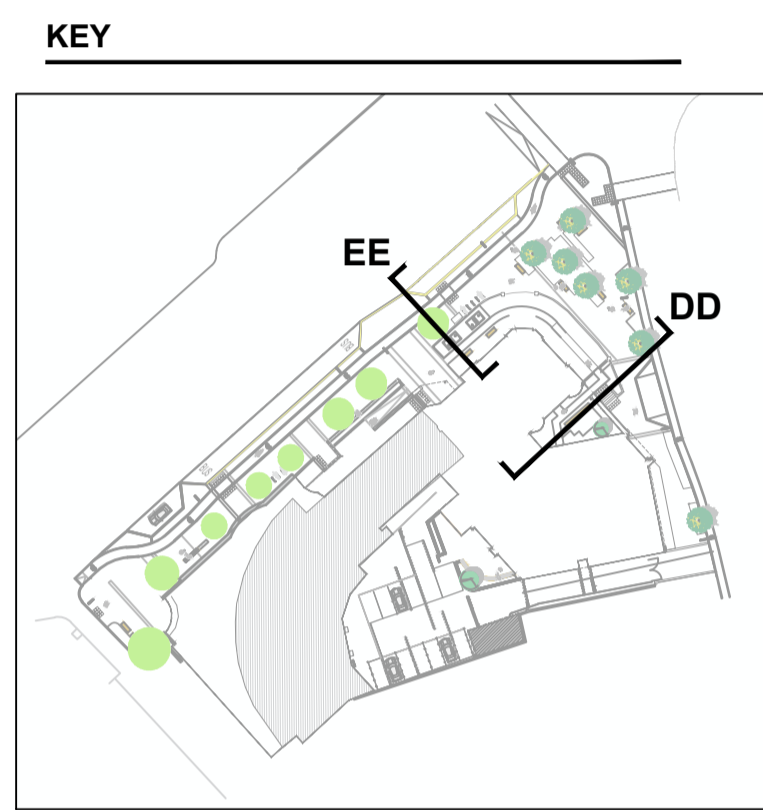


PROJECT
 CO. KILDARE
 LIBRARY, NEWBRIDGE
 KILDARE COUNTY

CLIENT
 KILDARE CO. COUNCIL
 Devoy Park, Naas Co. Kildare
 W91 X77F
 045980200 tel
<https://kildare.ie/countycouncil/index.html>

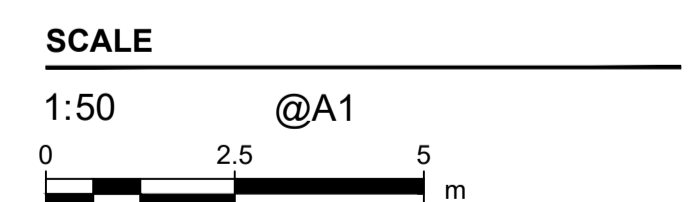
CONSULTANT
 AECOM
 24 Hatch Street Lower, Saint Kevin's
 Dublin, Ireland, D02 TY88
 +353 (0) 1 676 3671
<https://aecom.com/>



ISSUE/REVISION

I/R	DATE	DESCRIPTION
01	10/03/2023	PART 8 PLANNING

KEY PLAN



PROJECT NUMBER
 60669624

SHEET TITLE
 LANDSCAPE SECTIONS
 SHEET 3 OF 5

SHEET NUMBER
 60669624-ACM-XX-00-DR-LA-00-6001

This drawing has been prepared for the use of AECOM's client. It may not be used, modified, reproduced or relied upon by third parties, except as agreed by AECOM or as required by law. AECOM accepts no responsibility, and denies any liability whatsoever, to any party that uses or relies on this drawing without AECOM's express written consent. Do not scale this document. All measurements must be obtained from the stated dimensions.